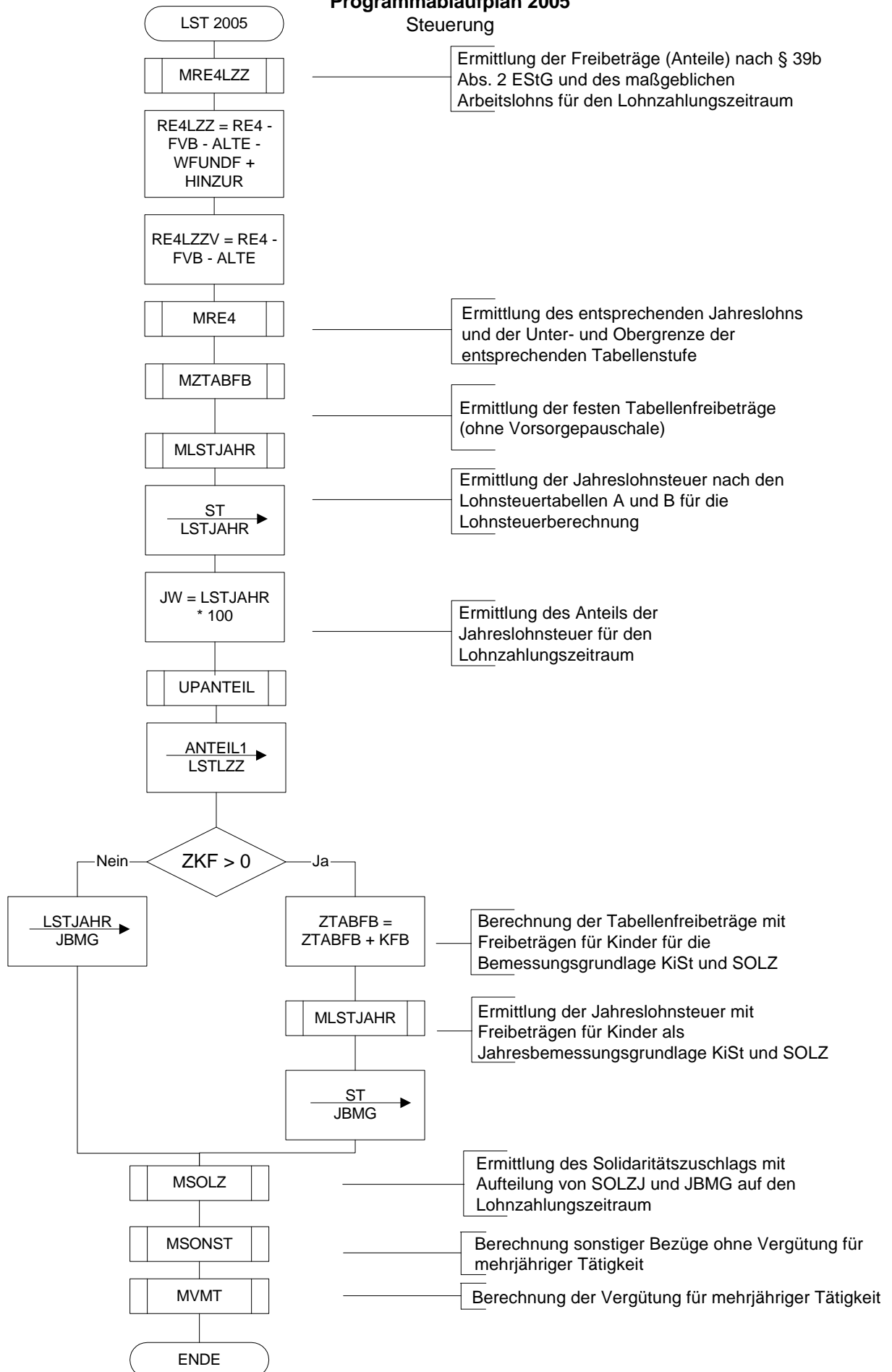
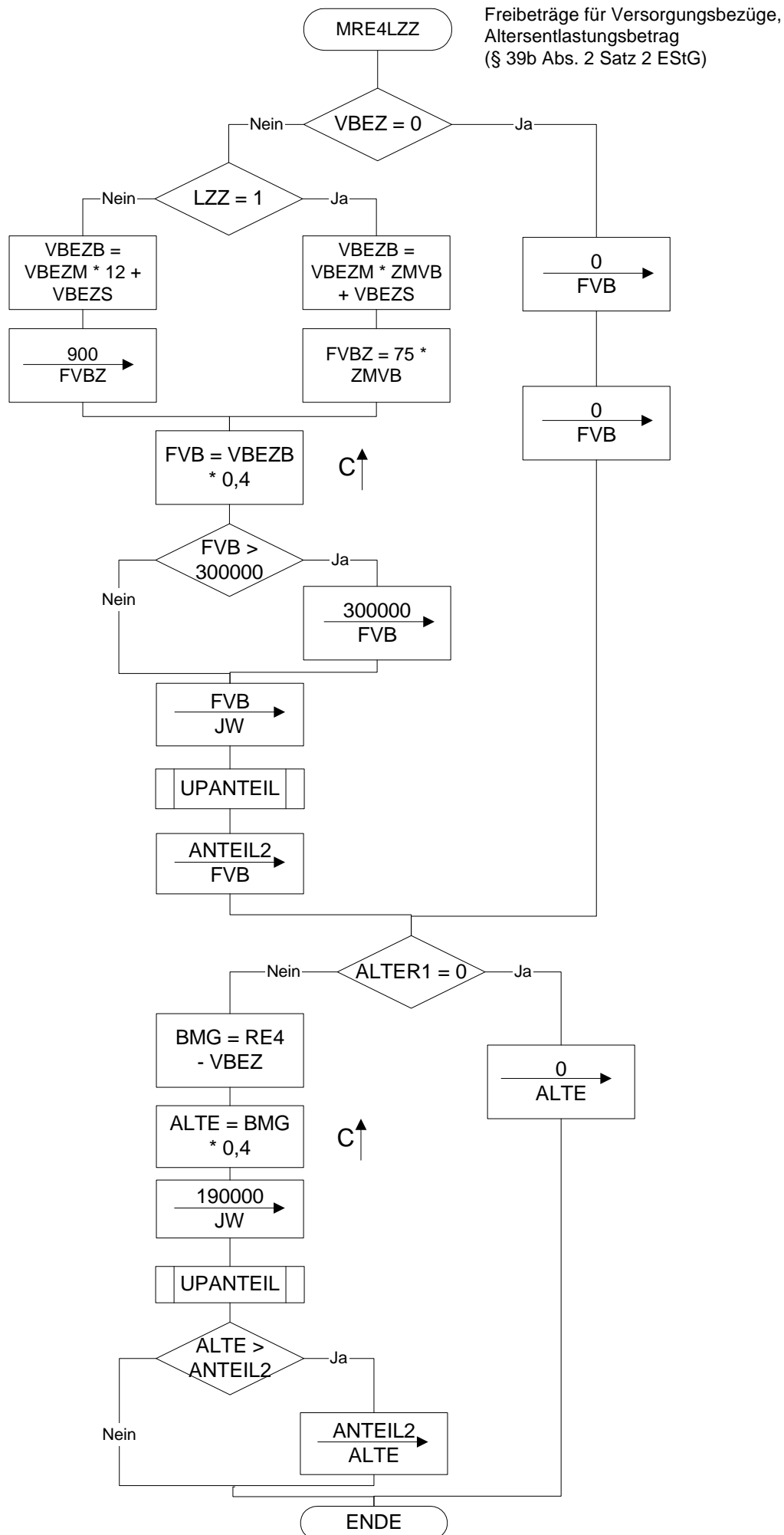


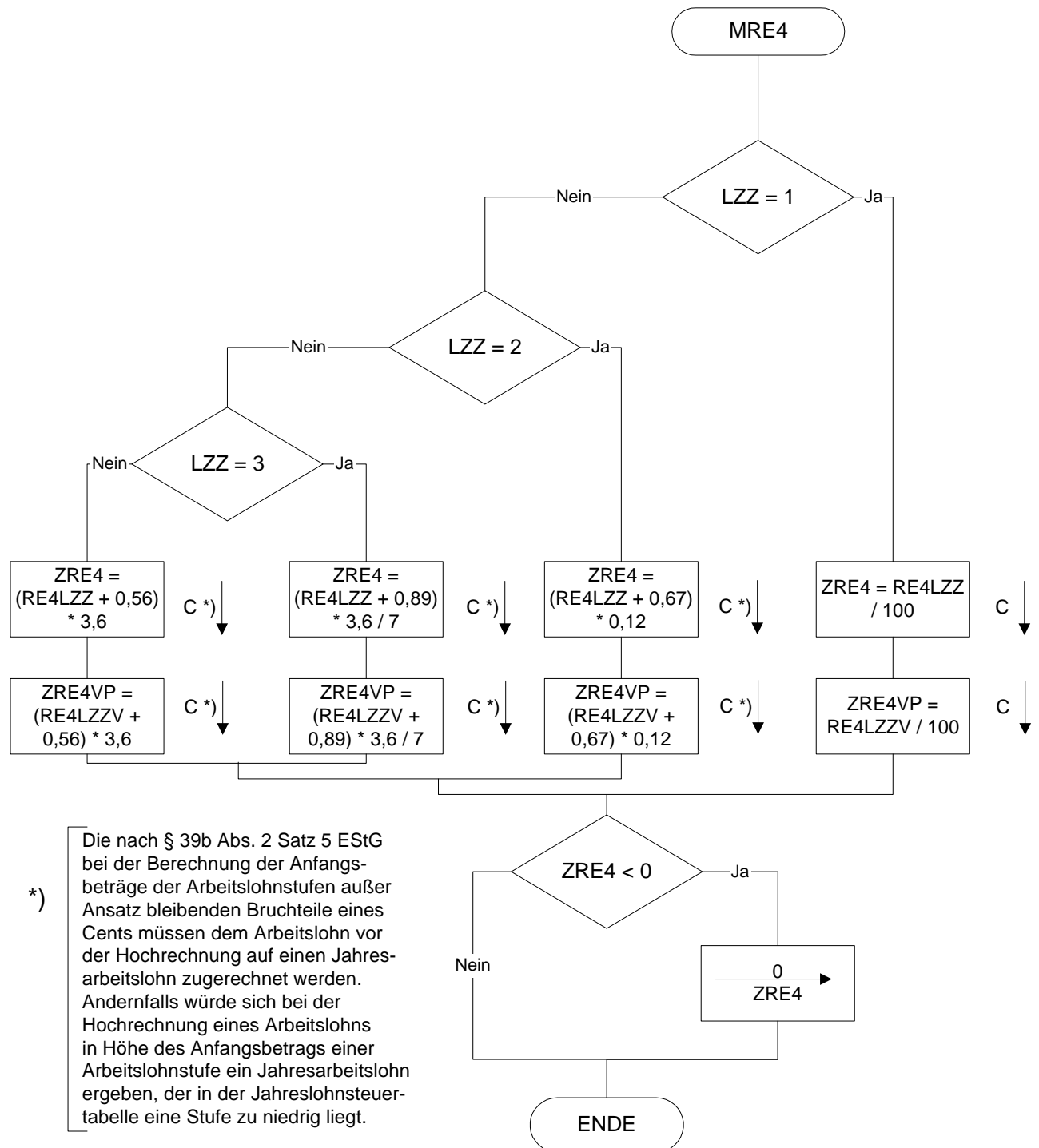
Programmablaufplan 2005

Steuerung

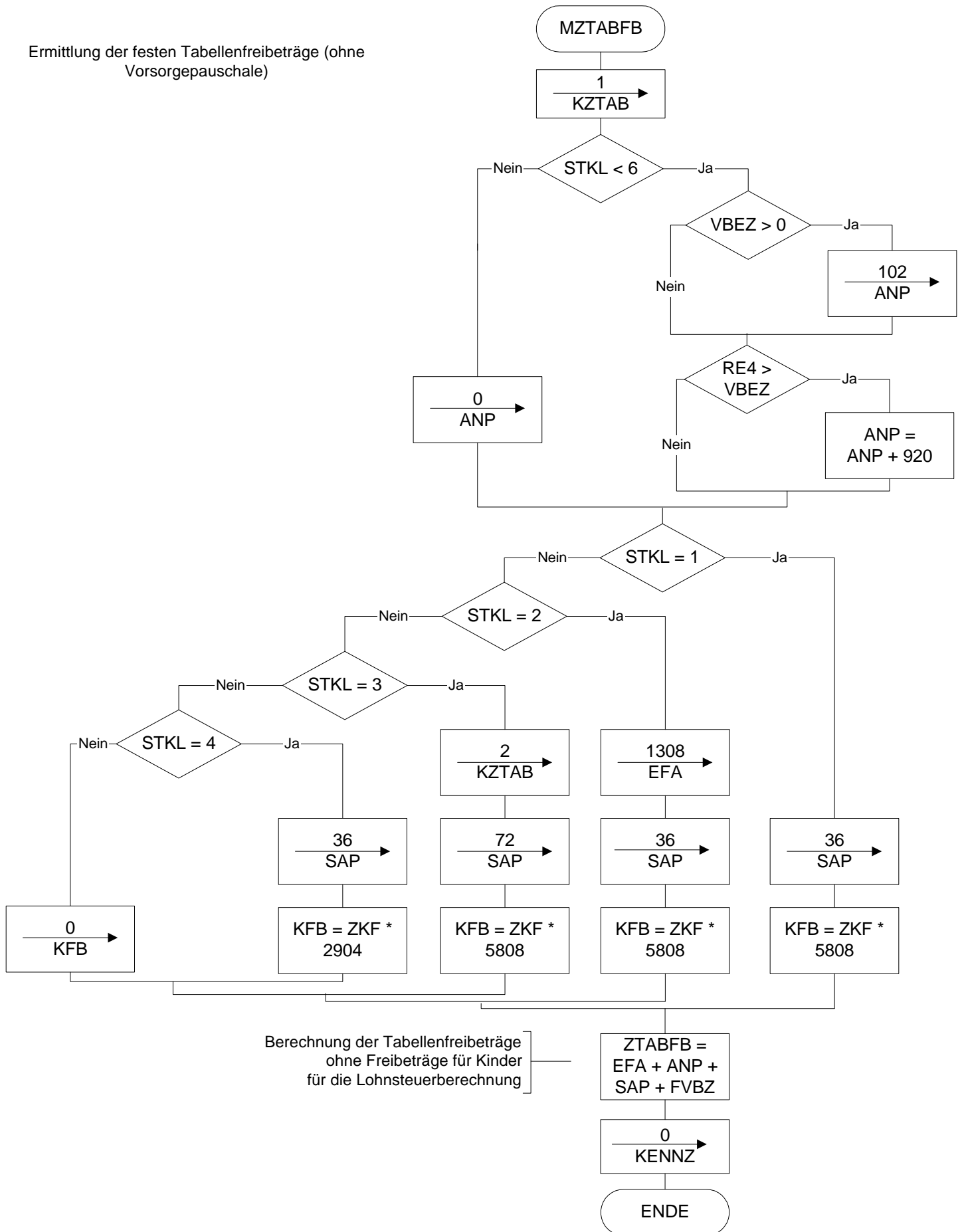


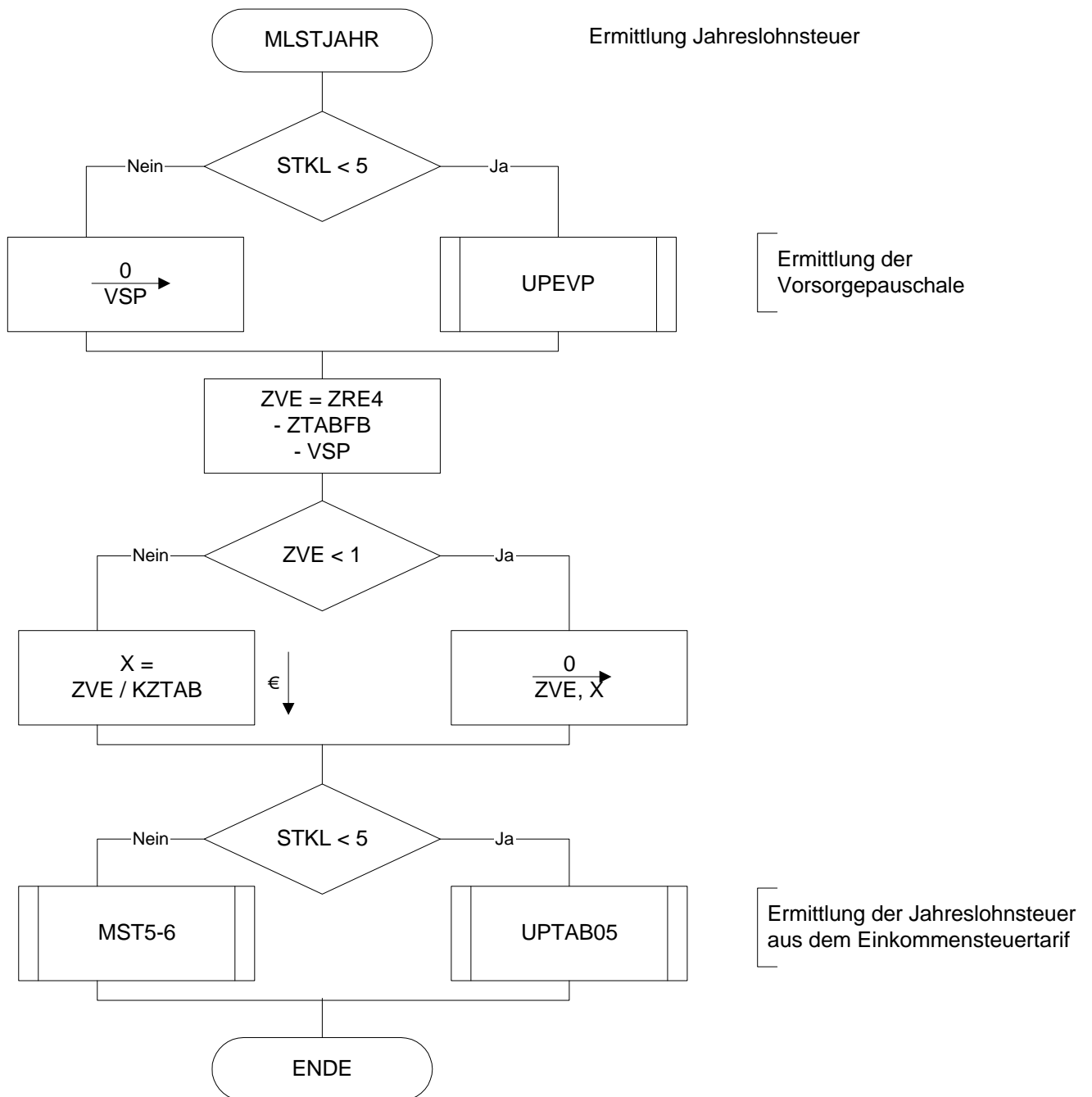


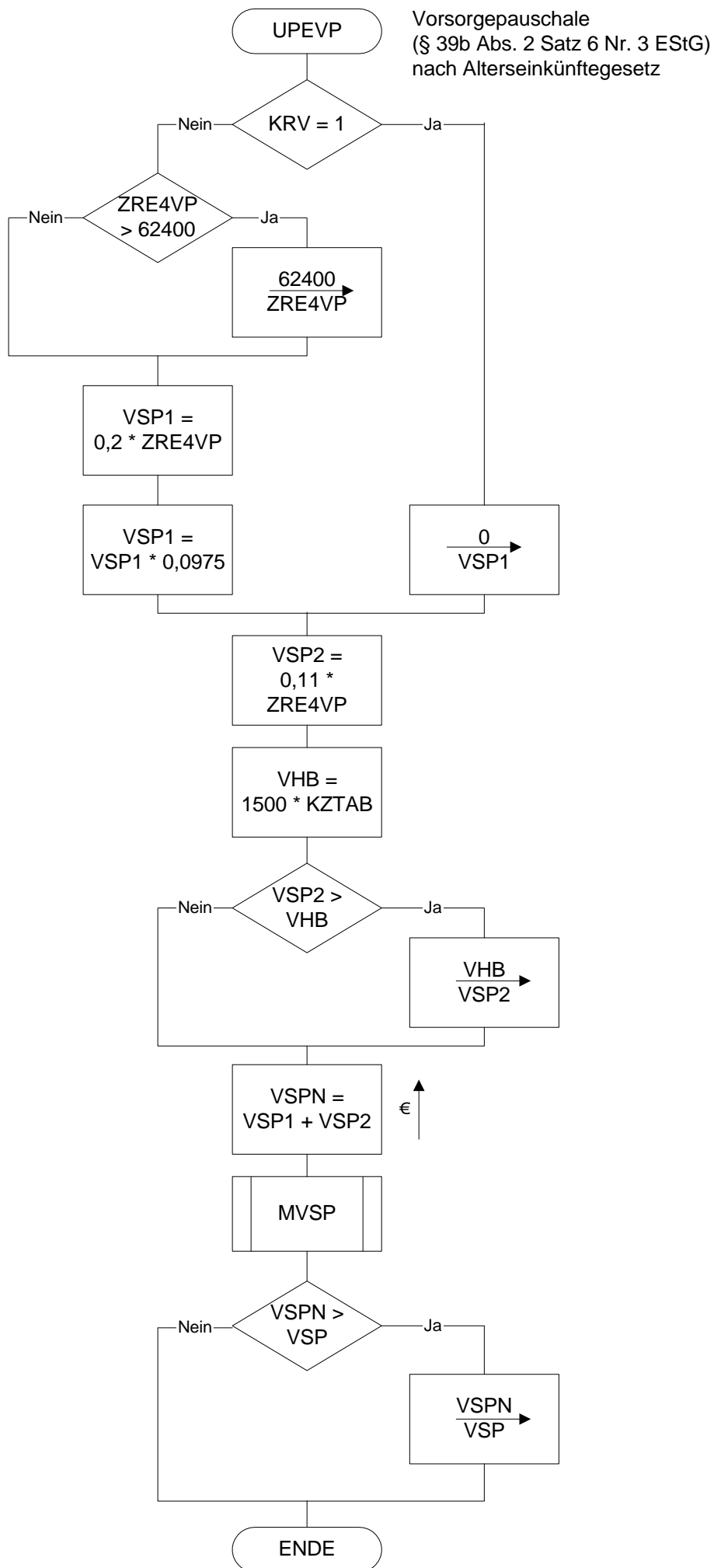
Maßgeblicher Arbeitslohn für die Jahreslohnsteuer

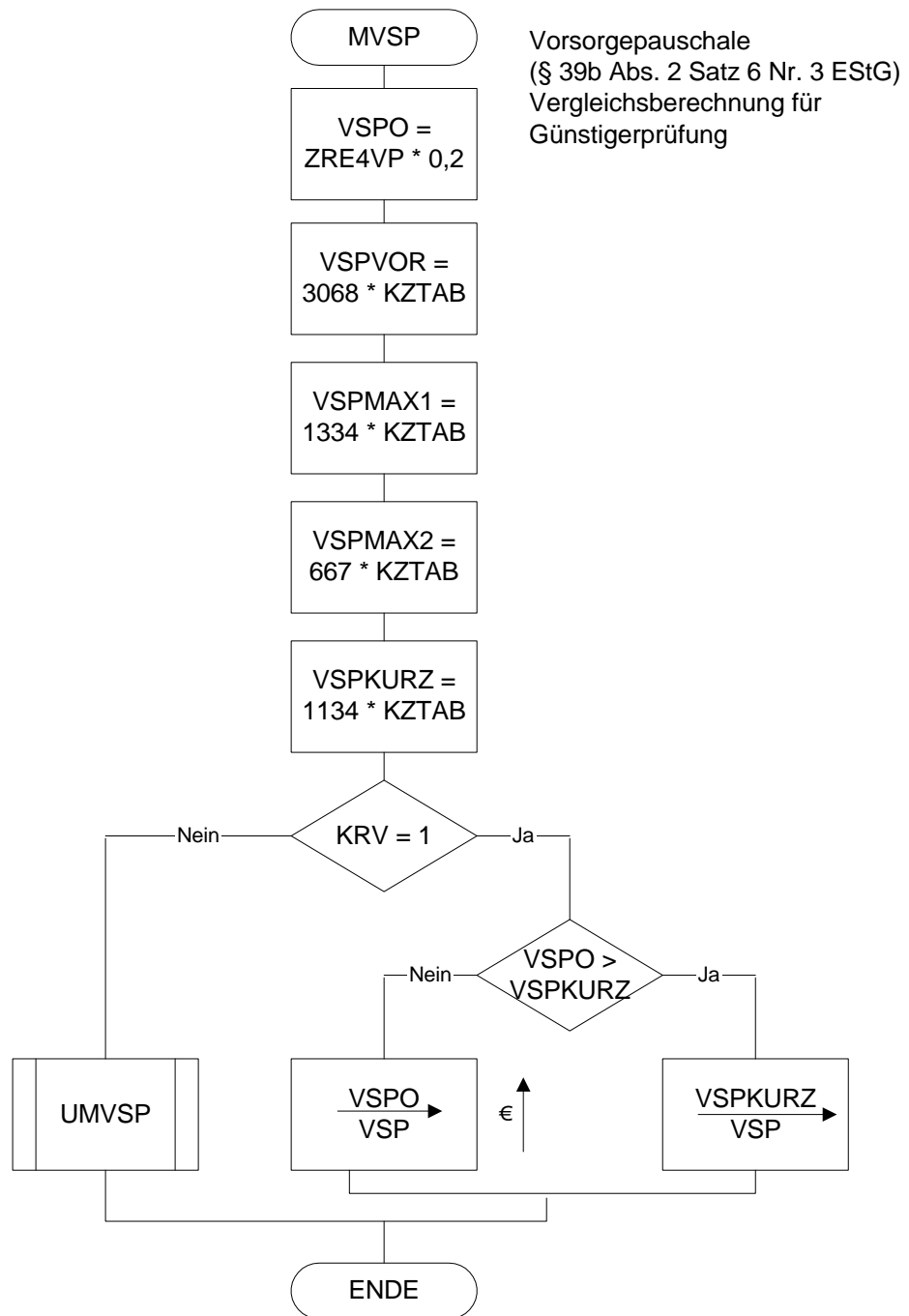


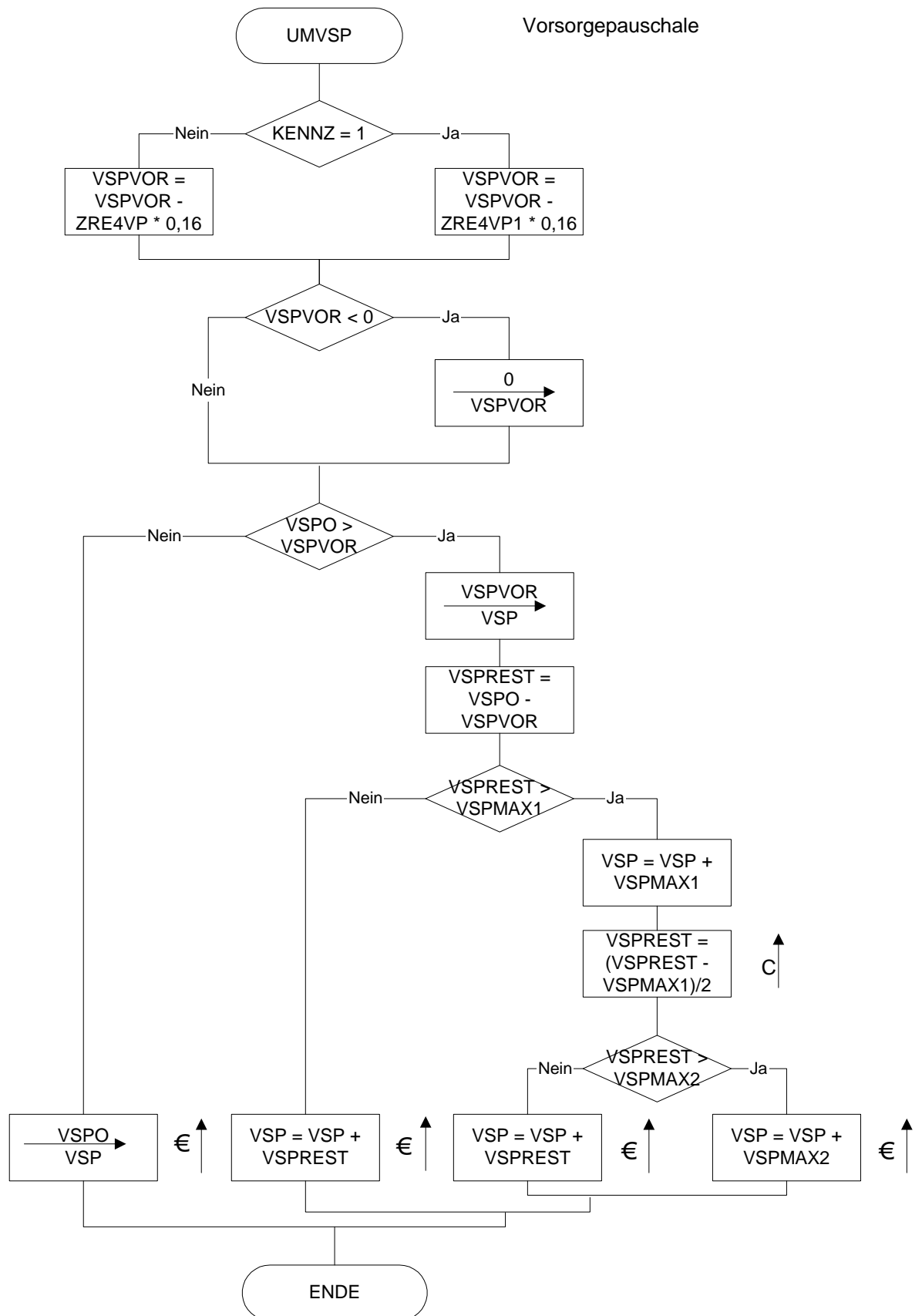
Ermittlung der festen Tabellenfreibeträge (ohne
Vorsorgepauschale)





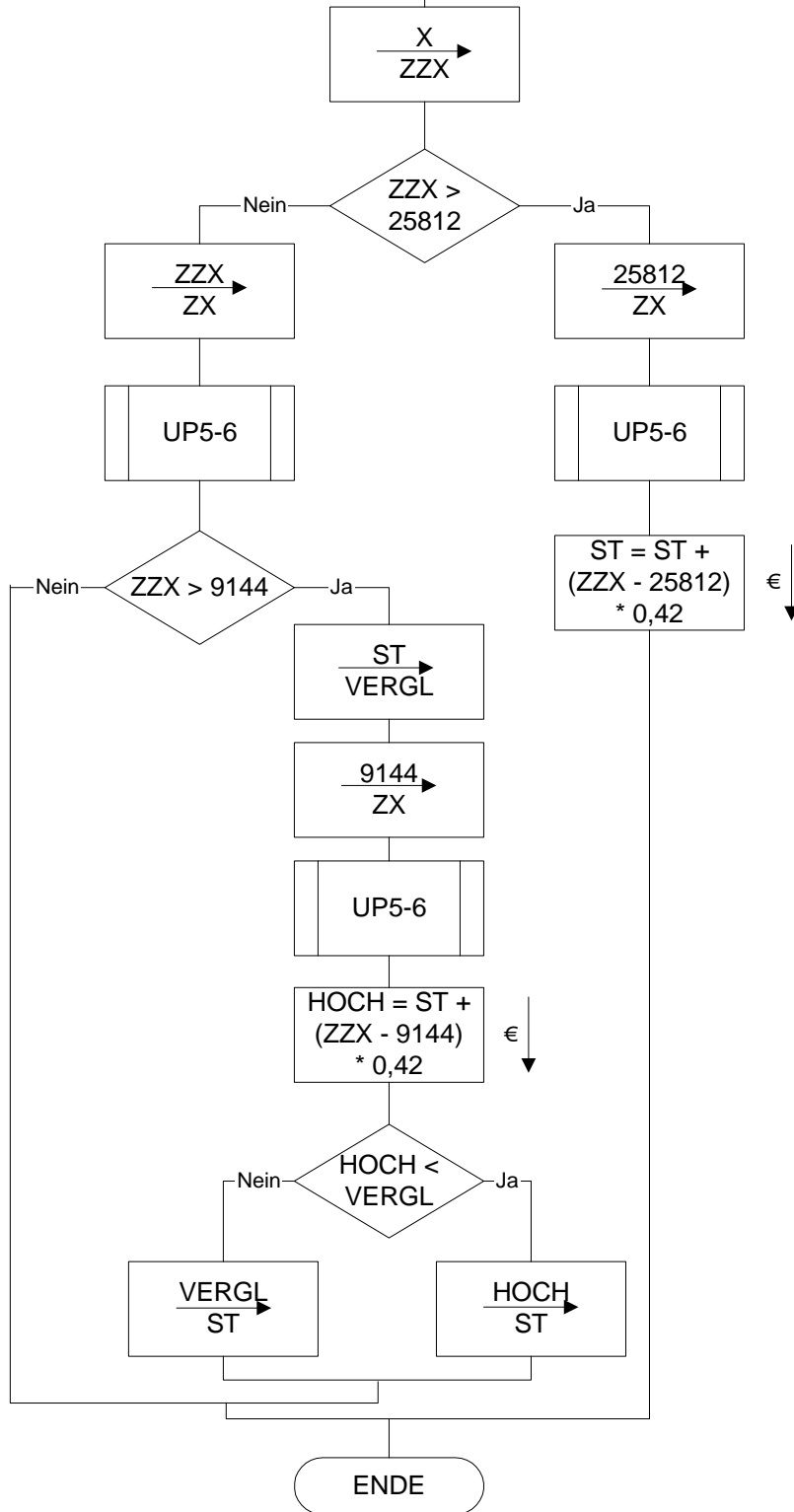




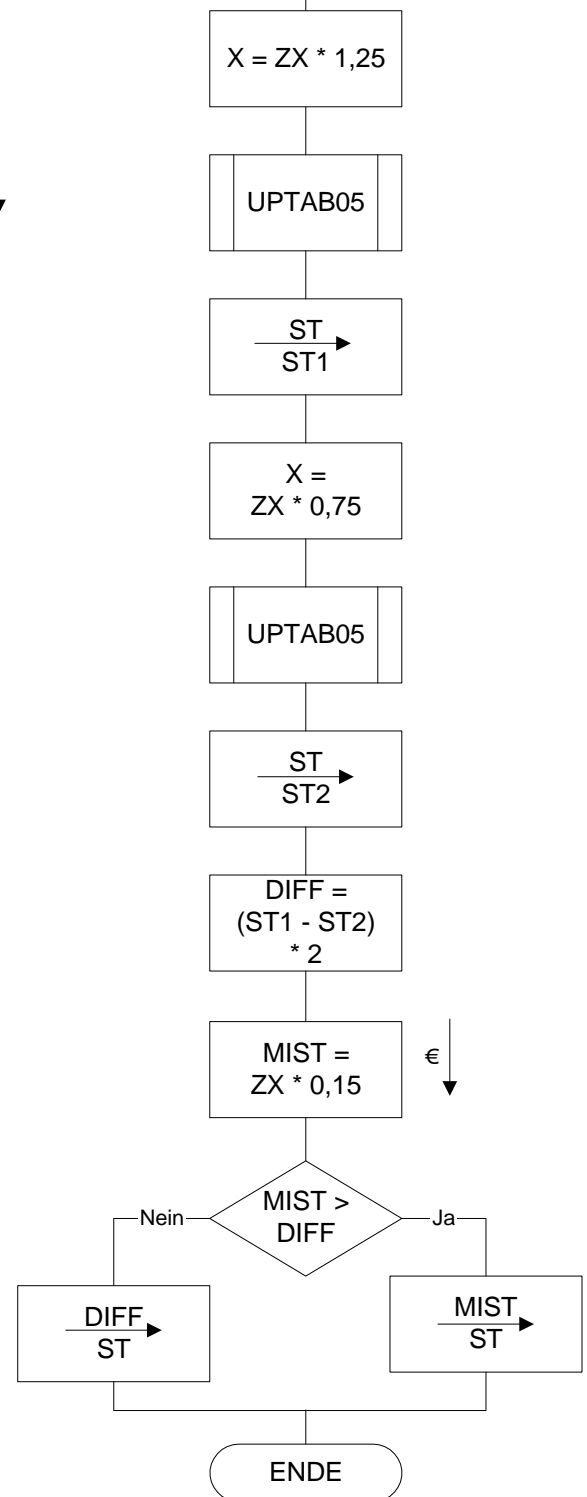


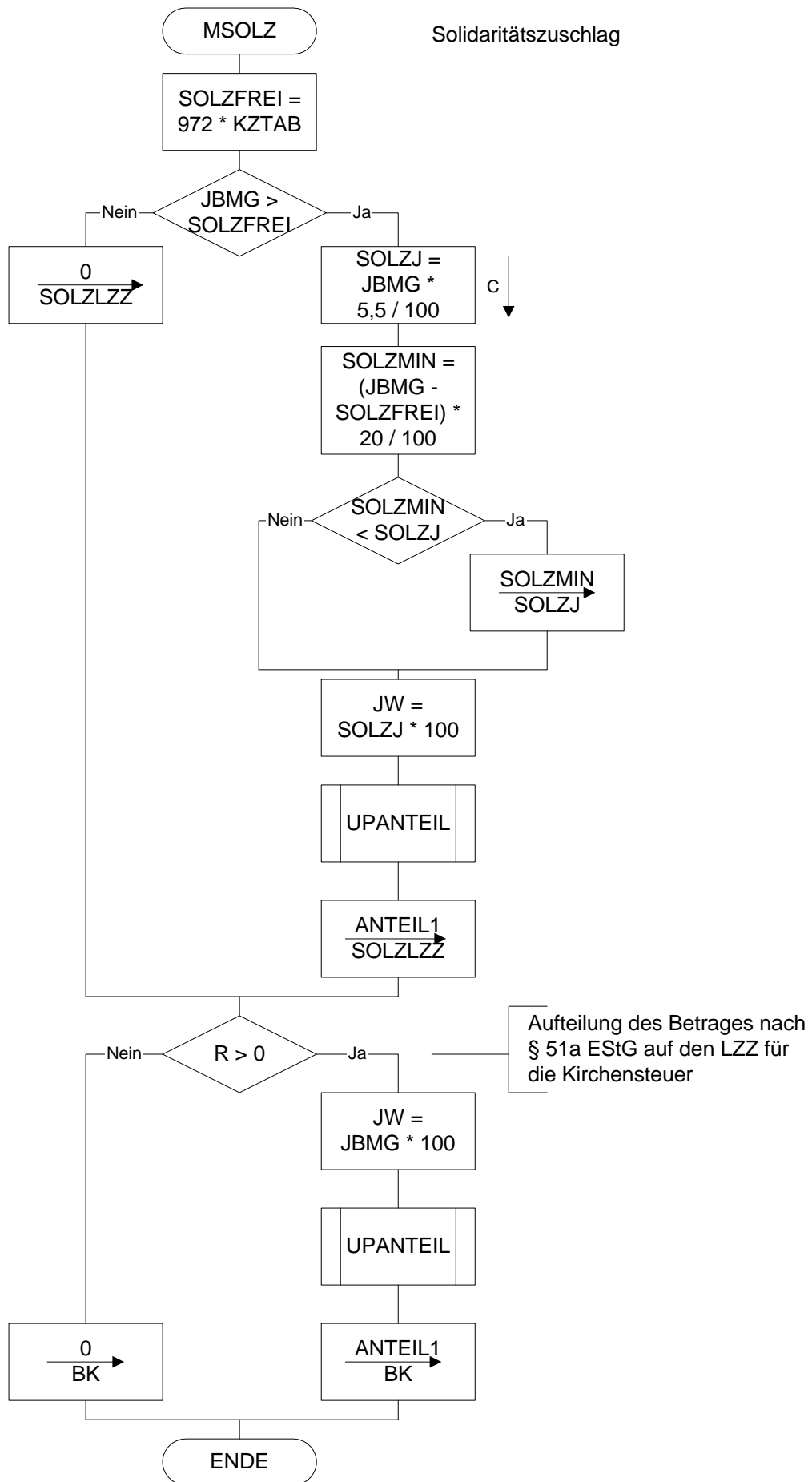
MST5-6

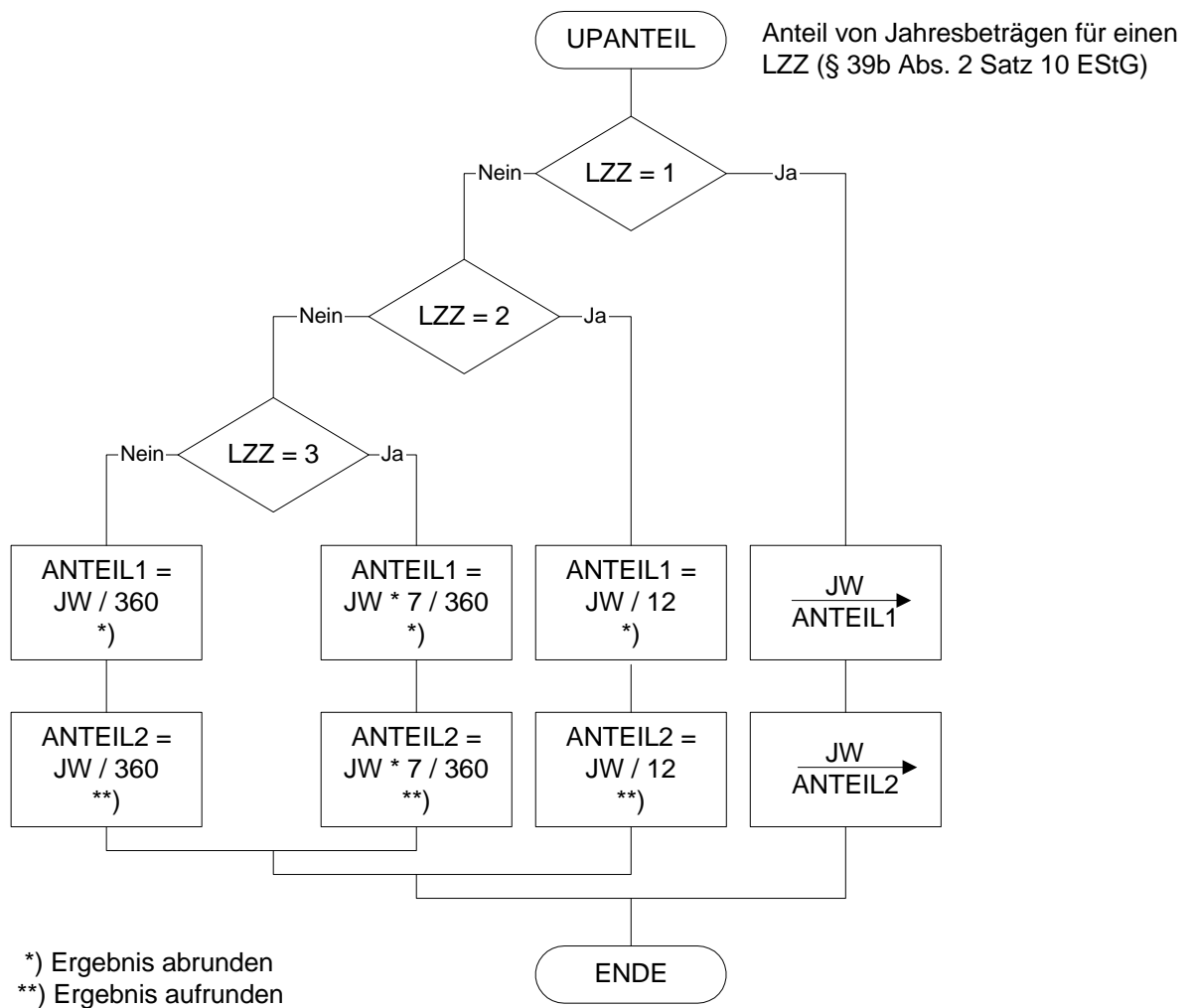
Lohnsteuer für die Steuerklassen V und VI
(§ 39b Abs. 2 Satz 8 EStG)



UP5-6

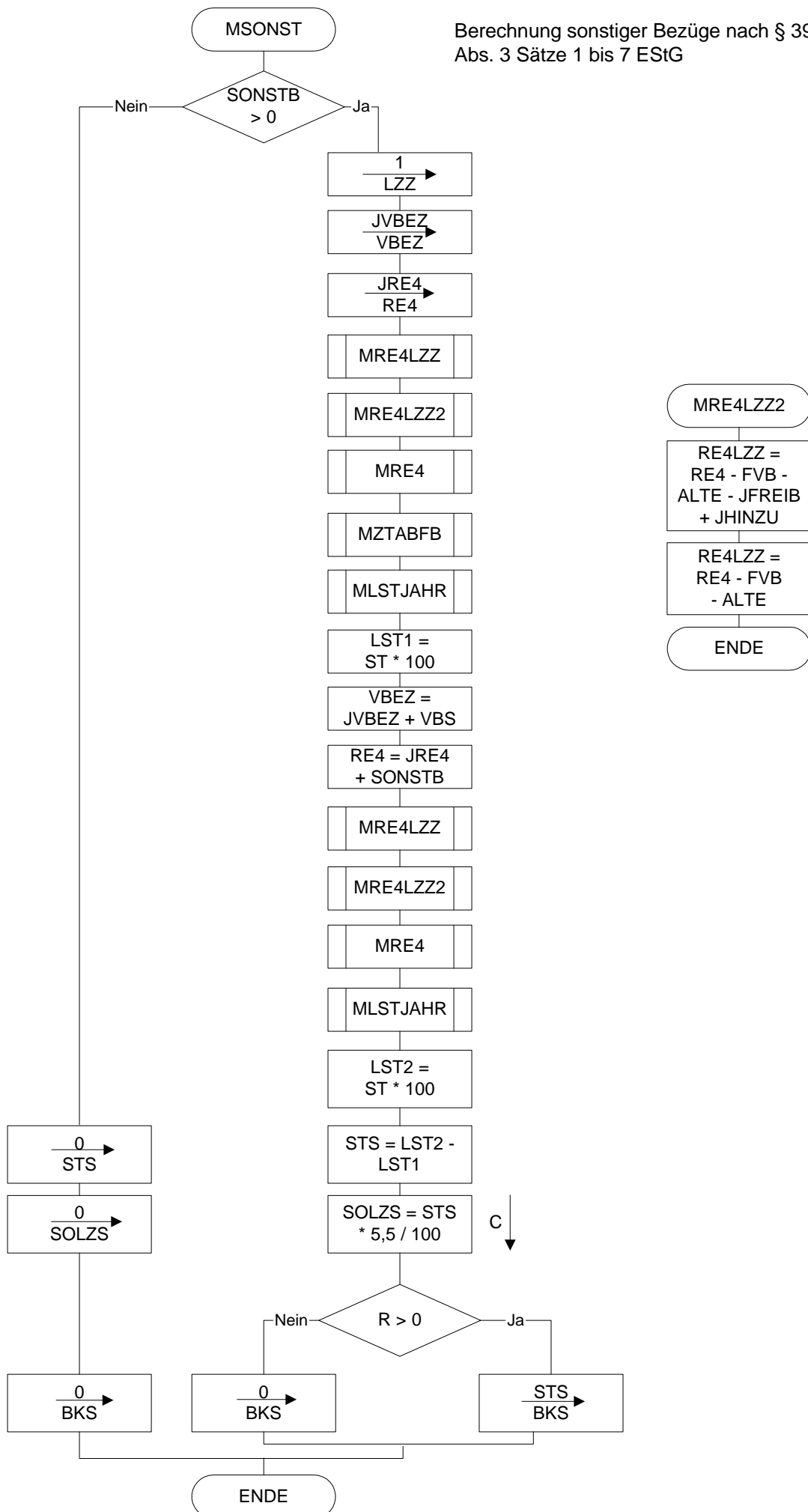




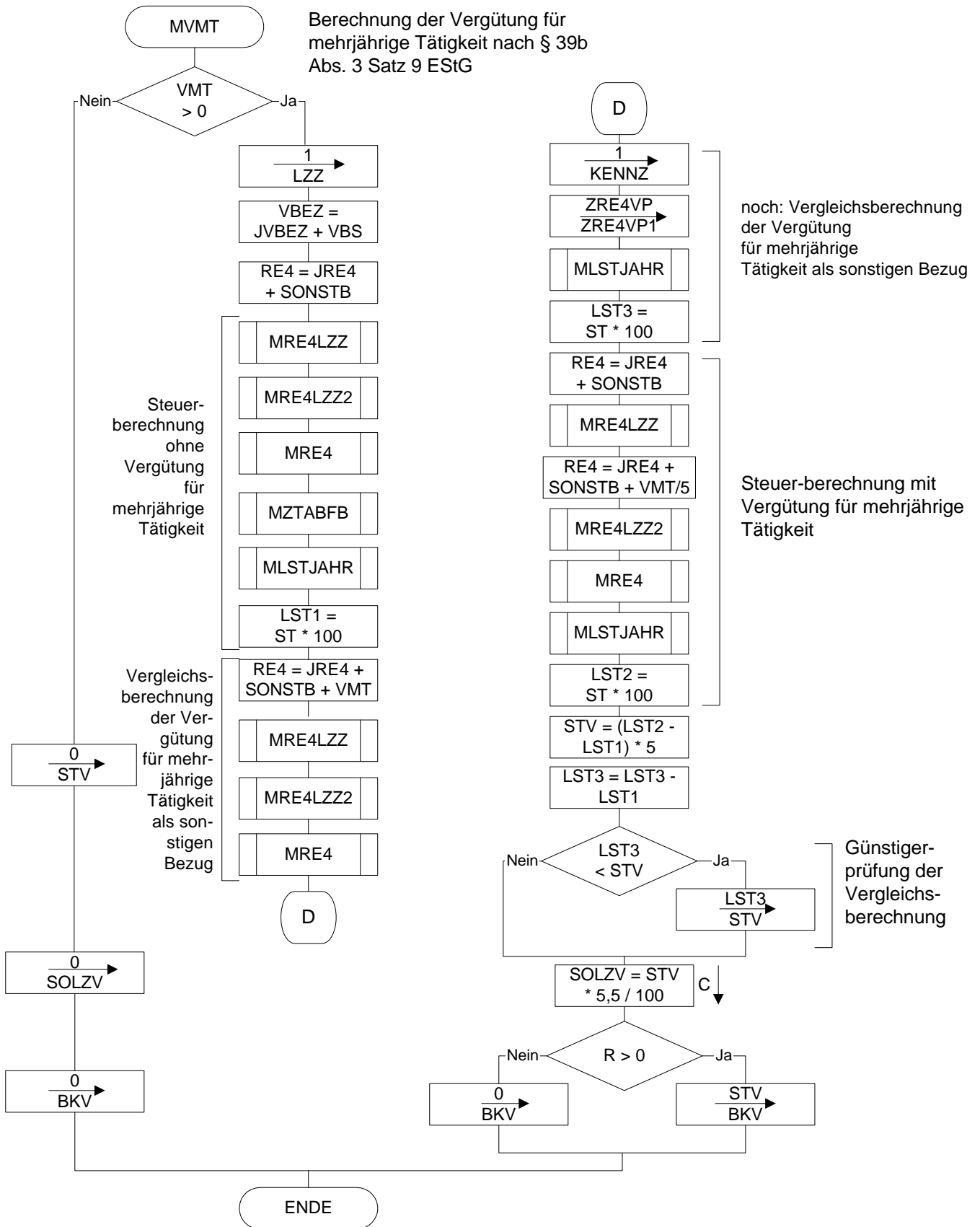


MSONST

Berechnung sonstiger Bezüge nach § 39b
Abs. 3 Sätze 1 bis 7 EStG



Berechnung der Vergütung für
mehrjährige Tätigkeit nach § 39b
Abs. 3 Satz 9 EStG



Tarifliche Einkommensteuer
(§ 32a EStG)

